

MRP Series Frame Style Standards

Frame Style Setting Standards for MRP-1000, 1500, 2000, 2500, 3000, & 3500 Series*

These frame style setting standards are designed to preset multiple models of the MRP Series gages for accurate inspection of API threaded connections. These standards consist of a rigid, non-adjustable steel block precision machined to proper size to tolerances of ±.0003". Round style standards, smaller than 2 3/8", are available as specials (contact us directly for more information). **When ordering, please specify the gage to be used.**

Thread Type	Connection Size	Pin Model	Box Model
NUE	2 3/8" NUE	FSTD-238N-P2	FSTD-238N-B2
	2 7/8" NUE	FSTD-278N-P2	FSTD-278N-B2
	3 1/2" NUE	FSTD-312N-P2	FSTD-312N-B2
	4 1/2" NUE	FSTD-412N-P2	FSTD-412N-B2

Thread Type	Connection Size	Pin Model	Box Model
EUE	2 3/8" EUE	FSTD-238E-P2	FSTD-238E-B2
	2 7/8" EUE	FSTD-278E-P2	FSTD-278E-B2
	3 1/2" EUE	FSTD-312E-P2	FSTD-312E-B2
	4 1/2" EUE	FSTD-412E-P2	FSTD-412E-B2

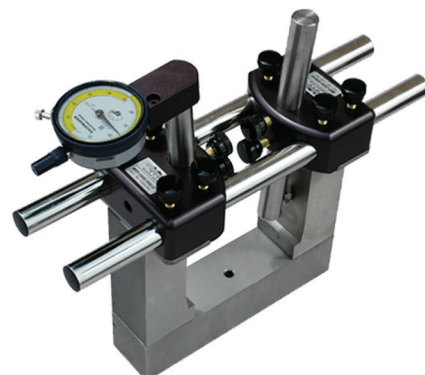
Thread Type	Connection Size	Pin Model	Box Model
Buttress	4 1/2" Buttress	FSTD-412B-P2	FSTD-412B-B2
	5" Buttress	FSTD-5B-P2	FSTD-5B-B2
	5 1/2" Buttress	FSTD-512B-P2	FSTD-512B-B2
	6 3/8" Buttress	FSTD-658B-P2	FSTD-658B-B2
	7" Buttress	FSTD-7B-P2	FSTD-7B-B2
	7 3/8" Buttress	FSTD-758B-P2	FSTD-758B-B2
	8 3/8" Buttress	FSTD-858B-P2	FSTD-858B-B2
	9 3/8" Buttress	FSTD-958B-P2	FSTD-958B-B2
	10 3/4" Buttress	FSTD-1034B-P2	FSTD-1034B-B2
	11 3/4" Buttress	FSTD-1134B-P2	FSTD-1134B-B2
	13 3/8" Buttress	FSTD-1338B-P2	FSTD-1338B-B2
	16" Buttress	FSTD-16B-P2	FSTD-16B-B2
	18 3/8" Buttress	FSTD-1858B-P2	FSTD-1858B-B2
	20" Buttress	FSTD-20B-P2	FSTD-20B-B2

Thread Type	Connection Size	Pin Model	Box Model
LTC	4 1/2" 8R LTC	FSTD-412L-P2	FSTD-412L-B2
	5" 8R LTC	FSTD-5L-P2	FSTD-5L-B2
	5 1/2" 8R LTC	FSTD-512L-P2	FSTD-512L-B2
	6 3/8" 8R LTC	FSTD-658L-P2	FSTD-658L-B2
	7" 8R LTC	FSTD-7L-P2	FSTD-7L-B2
	7 3/8" 8R LTC	FSTD-758L-P2	FSTD-758L-B2
	8 3/8" 8R LTC	FSTD-858L-P2	FSTD-858L-B2
	9 3/8" 8R LTC	FSTD-958L-P2	FSTD-958L-B2>P110 or FSTD-958L-B2<P110
	20" 8R LTC	FSTD-20L-P2	FSTD-20L-B2>JK55 or FSTD-20L-B2<JK55

*Standards for Tubing and Casing Connections for MRP-5000 gages are available. Special Orders, Non Standard API, Round or Premium Connection Setting Standards are available.



MRP Series External Frame Style Standard



MRP Series Internal Frame Style Standard

Frame Style Setting Standards for MRP-1000, 1500, 2000, 2500, 3000, & 3500 Series* (Cont.)

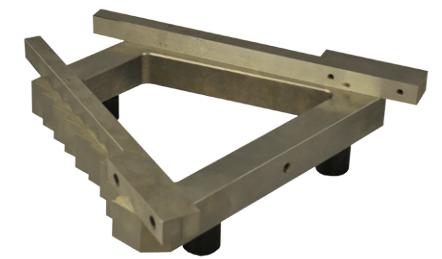
Thread Type	Connection Size	Pin Model	Box Model
STC	4 1/2" - 9.50# 8R STC	FSTD-412S-9-P2	FSTD-412S-9-B2
	4 1/2" - Other 8R STC	FSTD-412S-0-P2	FSTD-412S-0-B2
	5" - 11.50# 8R STC	FSTD-5S-11-P2	FSTD-5S-0-B2
	5" - Other 8R STC	FSTD-5S-0-P2	FSTD-5S-0-B2
	5 1/2" 8R STC	FSTD-512S-P2	FSTD-512S-B2
	6 3/8" 8R STC	FSTD-658S-P2	FSTD-658S-B2
	7" - 17.00# 8R STC	FSTD-7S-17-P2	FSTD-7S-17-B2
	7" - Other 8R STC	FSTD-7S-0-P2	FSTD-7S-0-B2
	7 3/8" 8R STC	FSTD-758S-P2	FSTD-758S-B2
	8 3/8" - 24.00# 8R STC	FSTD-858S-24-P2	FSTD-858S-24-B2
	8 3/8" - Other 8R STC	FSTD-858S-0-P2	FSTD-858S-0-B2
	9 3/8" 8R STC	FSTD-958S-P2	FSTD-958S-B2>P110 or FSTD-958S-B2<P110
	10 3/4" - 32.75# 8R STC	FSTD-1034S-32-P2	FSTD-1034S-32-B2
	10 3/4" - Other 8R STC	FSTD-1034S-0-P2	FSTD-1034S-0-B2>P110 or FSTD-1034S-0-B2<P110
	11 3/4" 8R STC	FSTD-1134S-P2	FSTD-1134S-B2>P110 or FSTD-1134S-B2<P110
	13 3/8" 8R STC	FSTD-1338S-P2	FSTD-1338S-B2>P110 or FSTD-1338S-B2<P110
	16" 8R STC	FSTD-16S-P2	FSTD-16S-B2
	18 3/8" 8R STC	FSTD-1858S-P2	FSTD-1858S-B2
	20" 8R STC	FSTD-20S-P2	FSTD-20S-B2>JK55 or FSTD-20S-B2<JK55

*Standards for Tubing and Casing Connections for MRP-5000 gages are available. Special Orders, Non Standard API, Round or Premium Connection Setting Standards are available.

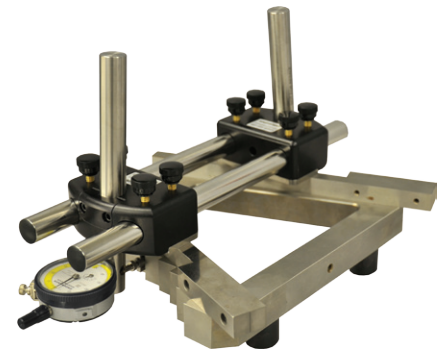
Step Style Setting Standards for MRP-1000, 1500, 2000, & 2500 Series

The step style setting standards are designed to preset several models of the MRP Series gages for accurate inspection of API threaded connections. These standards consist of a rigid, non-adjustable steel block precision machined to proper size to tolerances of ±.0003".

Thread Type	Connection Sizes	Pin Model	Box Model
EUE	2 3/8" - 4 1/2"	SSTD-P-EUE	SSTD-B-EUE
NUE	2 3/8" - 4 1/2"	SSTD-P-NUE	SSTD-B-NUE
Line Pipe	2 1/2" - 10"	SSTD-P-LP	SSTD-B-LP
LTC	4 1/2" - 9 3/8"	SSTD-P-LTC	SSTD-B-LTC
STC	4 1/2" - 6 3/8"	SSTD-P-STC1	SSTD-B-STC1
	7" - 8 3/8"	SSTD-P-STC2	SSTD-B-STC2
	10 3/4" - 13 3/8"	SSTD-P-STC3	SSTD-B-STC3
Buttress	4 1/2" - 7 3/8"	SSTD-P-BTC1	SSTD-B-BTC1
	8 3/8" - 13 3/8"	SSTD-P-BTC2	SSTD-B-BTC2



SSTD-P-LTC



MRP-2000 on pin step standard



Pin and Box Step Standards